

India's Leading Provider Of

# SOLAR MOUNTING SYSTEMS

SOLAR TRACKER • GROUND MOUNTED  
ROOF MOUNTED • CARPORT





ENGINEERING A  
**GREENER  
FUTURE,  
TOGETHER**



# ABOUT US

**At MTE Group, we are more than engineers and builders; we are stewards of our planet, driven by a passion for creating sustainable solutions that leave a positive mark on Mother Earth. Our commitment to innovation and excellence is matched only by our dedication to environmental responsibility.**



# OUR JOURNEY



**2021:** The foundation was laid with the inauguration of our state-of-the-art factory, boasting a production capacity of 1.5 GW per year. This marked the beginning of our mission to drive innovation and sustainability in solar structures.

**2022:** We proudly marked a milestone with our very first export order, opening new avenues for international collaboration and growth.

**2023:** With consistent dedication, 15% of our total revenue was derived from exports. This reflects our growing reputation as a global player in the solar industry.

**2024:** To meet the increasing demand and continue our growth trajectory, we expanded our production capacity to an impressive 4 GW annually, solidifying our leadership in the solar structure market.

**Vision 2025:**

As we look to the future, our ambition for 2025 is clear: Crossing a production capacity of 6 GW per year. We are committed to scaling up our operations, optimizing efficiency, and expanding our global footprint. Our goal is to continue delivering high-quality solar solutions that drive sustainable energy transformation worldwide.



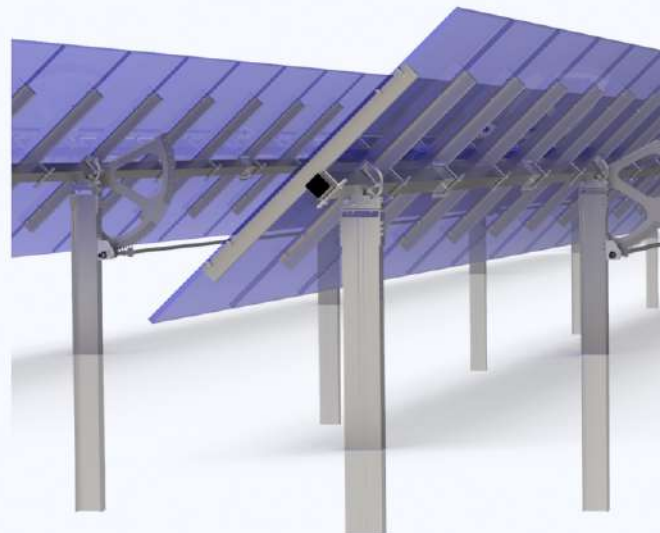
# SINGLE AXIS SOLAR TRACKER

## Here are the advantages:

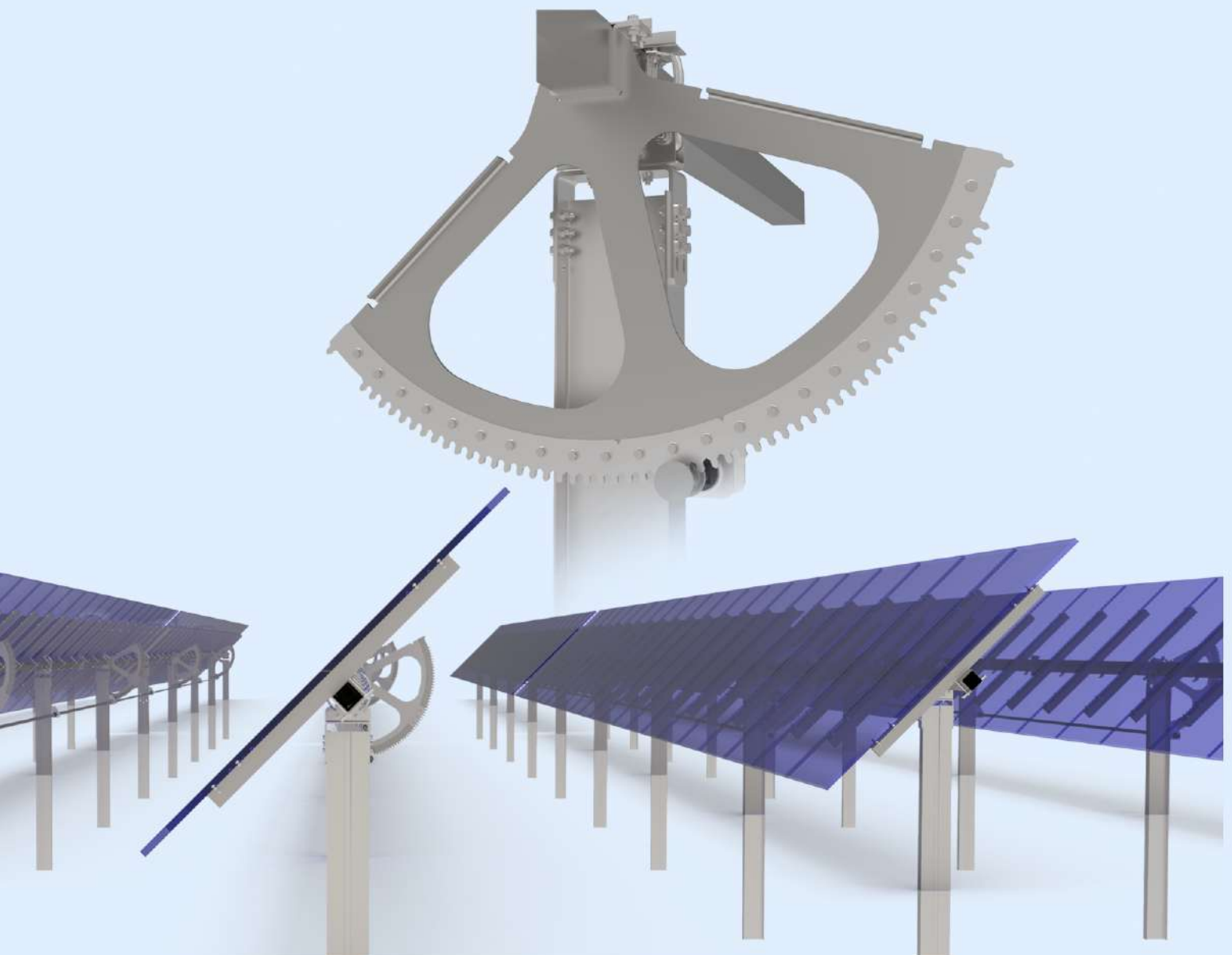
- No heavy equipment or special tools required for installation
- Eliminates galloping effect
- Stability comparable to fixed tilt systems with Geneva Drive
- Low installation and maintenance costs
- Minimal module loads
- Free passage between tracker tables
- Pre-assembled components for easier installation
- No need for ground sealing
- Self-powered system with wireless communication (grid power option available)
- High-tensile steel allows for wider spans
- Pivots 100° to maximize sunlight capture

## INDEPENDENT SELF-LOCKING ROWS WITH $\pm 50^\circ$ ROTATIONAL RANGE & 100° TRACKING RANGE.

To eliminate the galloping effect, giving you a higher level of investment security. In addition, a wide rotational range of 100° provides more energy during the day.



<b>TRACKING</b>	
Tracking Method	Single-axis horizontal, distributed drive
Backtracking	Smart backtracking customized to terrain for maximum production
East-West Range of Motion	Max.- $\pm 50^\circ$ ; Greater range available upon request
Tracking Accuracy	$2^\circ - 5^\circ$
Night Stow	At $0^\circ$ ; Software Configuration options available
<b>CONSTRUCTION</b>	
Structural Materials	HDGI, Galvalume AZ150, POSMAC, STEEL
Bearings	No Lubrication needed
Mechanical Connections	Bolting. No welding, Drilling or Cutting Required.



# GROUND MOUNTING SYSTEMS

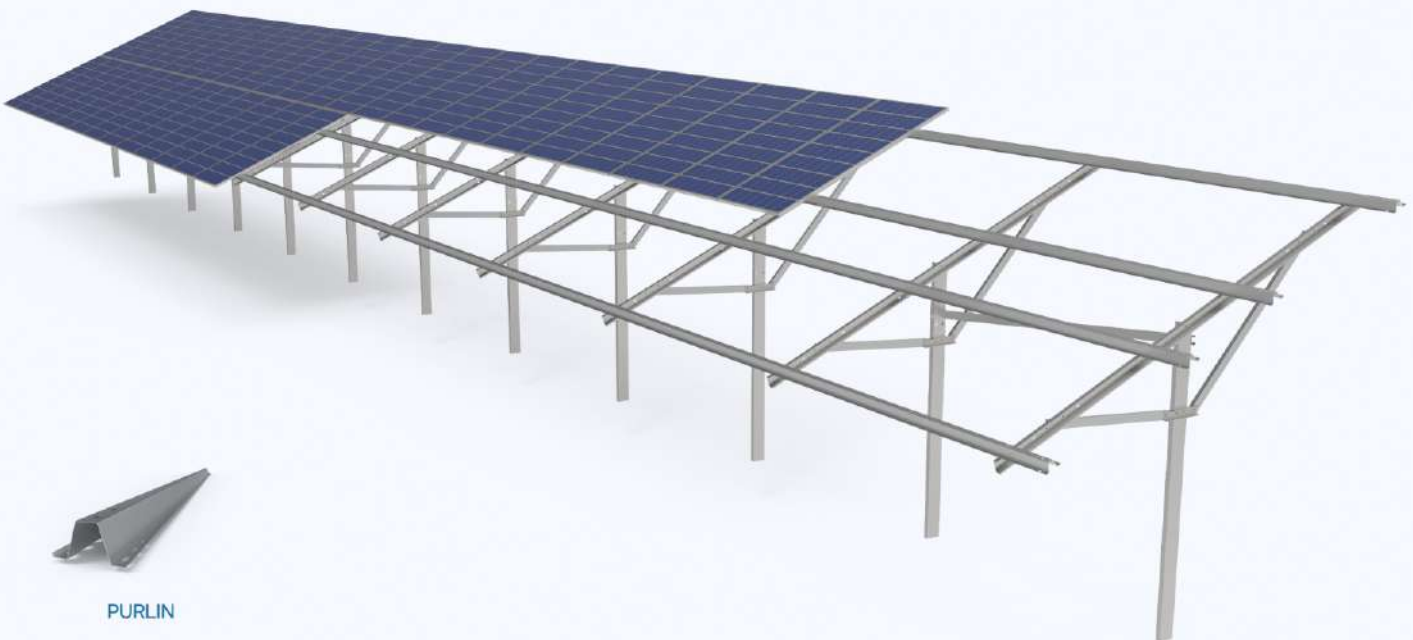
## SINGLE POLE

For over a decade, ground-mounted solar structures have been the go-to solution, powering more than 4 GWp of projects globally. At MTE Structure, we're proud to be at the forefront of this revolution, delivering robust and reliable systems that stand the test of time.

### Technical Specifications:

- Type of Structure- Fixed Tilt & Manual Tilt
- Tilt Angle- Depends on Latitude
- Module Orientation- Portrait & Landscape
- Corrosion resistance - Up to C6

- Structural Material - Zinc-Magnesium Alloy Coating or HDGI/Galvalume/POSMAC
- Cost-effective design featuring fewer posts and robust rammed steel foundations



PURLIN



COLUMN



RAFTER



CROSS BRACING



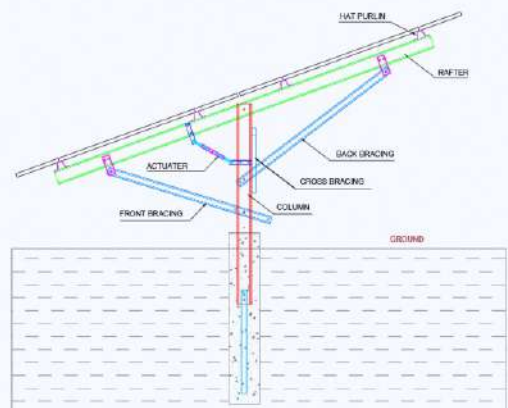
FRONT BRACING



BRACING CONNECTOR



REAR BACK BRACING





# GROUND MOUNTING SYSTEMS

## DUAL POLE

Introducing our Dual-Ground Mounted System, engineered to ensure a long-lasting service life for your ground-mounted solar installation. With MTE Structure, you can trust in the durability and performance of your solar projects for years to come.

### Technical Specifications:

- Type of Structure- Fixed Tilt & Manual Tilt
- Module Orientation- Portrait & Landscape
- Corrosion resistance - Up to C6
- Structural Material - Zinc-Magnesium Alloy Coating or HDGI/Galvalume/POSMAC
- High economic efficiency
- Strong and durable



COLUMN



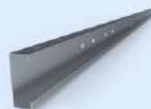
CROSS BRACING



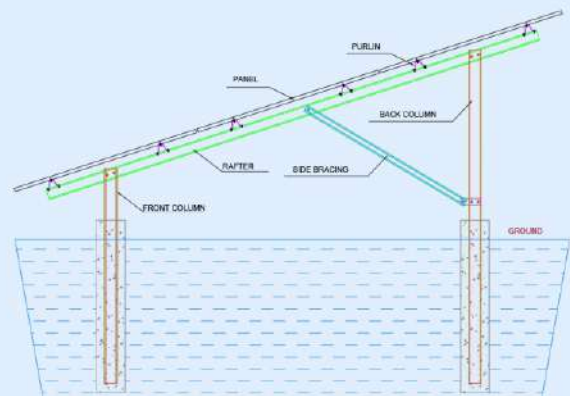
PURLIN



BRACING CONNECTOR



RAFTER

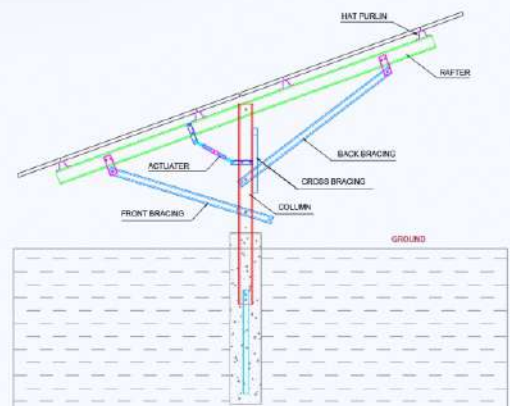
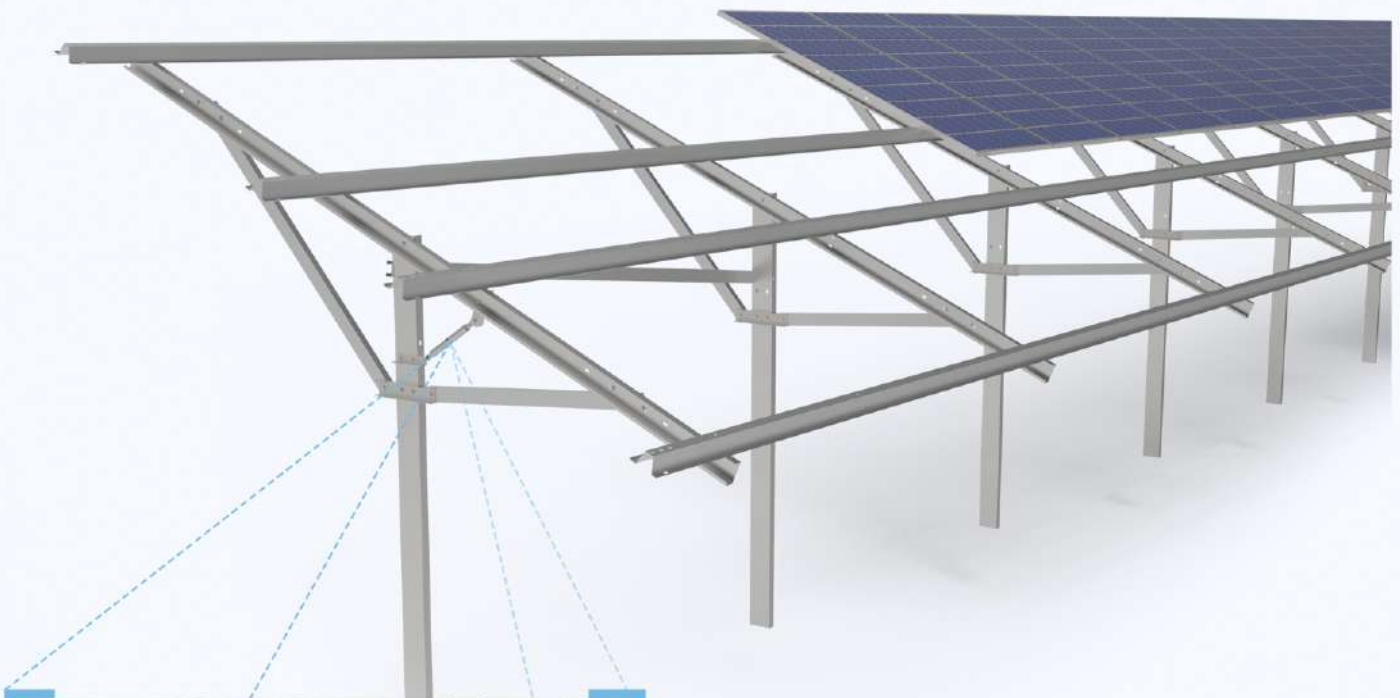


# GROUND MOUNTING SYSTEMS WITH SCREW JACK

Precision and Strength for Unmatched Solar Performance this technology guarantees precise alignment and optimal energy capture, maximizing efficiency.

## Technical Specifications:

- Type of Structure- Fixed Tilt & Manual Tilt
- Module Orientation- Portrait & Landscape
- Corrosion resistance – Up to C6
- Structural Material – Zinc-Magnesium Alloy Coating or HDGI/Galvalume/POSMAC
- Cost-effective, with reduced labor expenses



# SOLAR CARPORTS

Transform Your Parking Lot into a Powerhouse

MTE Structure's Solar Carports turn your parking area into a valuable energy asset, offering a smart and space-efficient alternative to large-scale PV systems. Maximize your space while generating clean energy—an innovative solution that works as hard as you do.

### Technical Specifications:

- Module Orientation- Portrait & Landscape
- Tilt Angle- 0–10 Degree
- Corrosion resistance – Up to C6
- Structural Material – Zinc-Magnesium Alloy Coating or HDGI/Galvalume/POSMAC
- Allows for both straight and angled parking configurations with its efficient single-column design



LONG PURLING



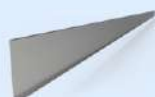
STIFFNER



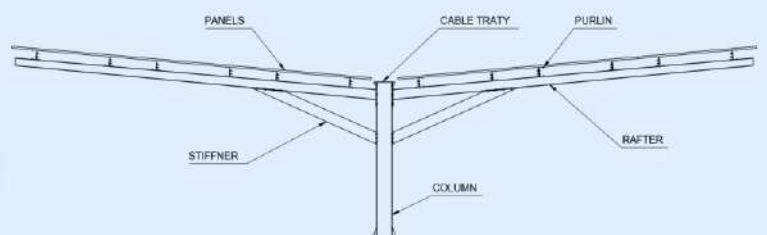
COLUMN



RAFTER



CABLE TRAY



# RCC ROOFTOP STRUCTURES

Achieve Optimal Inclination with Flexibility and Ease.

MTE Structure's RCC Rooftop Systems empower you to easily attain your desired inclination angle and explore limitless design variations with minimal components.

## Technical Specifications:

- Type of Structure- Single & Double Pole Structure
- Tilt Angle- 0-40 Degree or Depends on the Latitude

- Corrosion resistance – Up to C6
- Structural Material - Zinc-Magnesium Alloy Coating or HDGI/Galvalume/POSMAC
- Module Orientation- Portrait & Landscape



BACK LEG



RAFTER



PURLIN



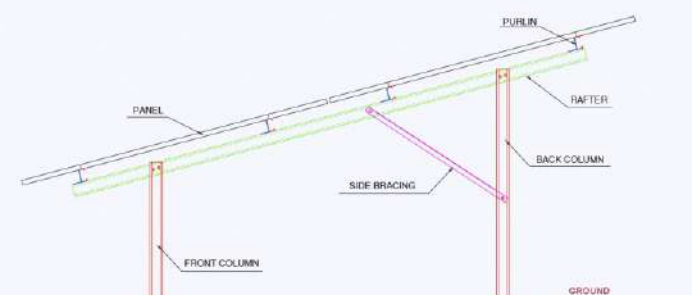
FRONT LEG



CROSS BRACING



BRACING CONNECTOR

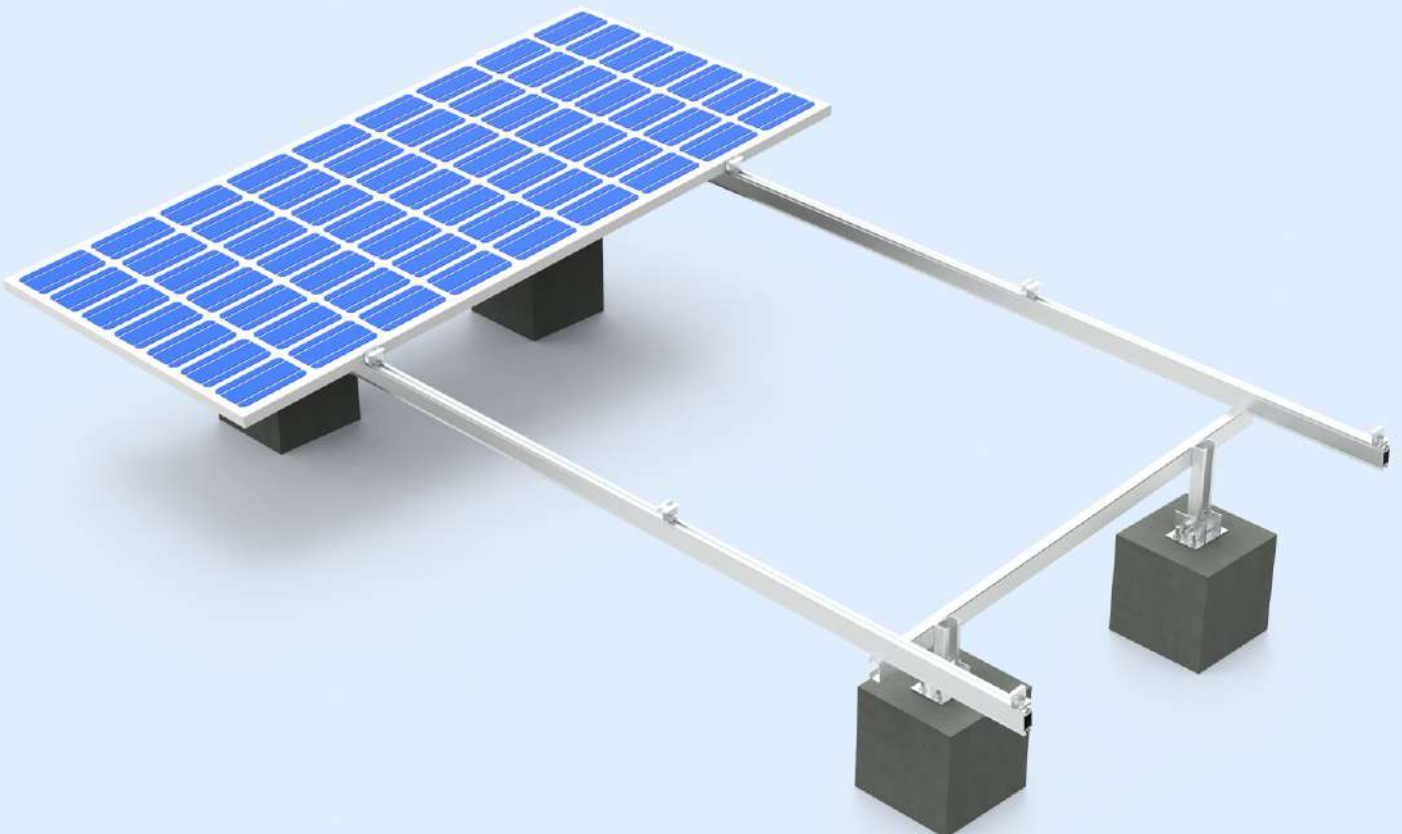


## RCC ROOF-TOP (ALUMINIUM STRUCTURE)

**RCC ROOF-TOP (ALUMINIUM STRUCTURE):** MTE Group delivers high-performance aluminium solar structures designed for RCC foundations. Known for their strength, lightweight build, and corrosion resistance, they are ideal for solar projects in both urban and rural areas.

### Technical Specifications:

- Type of Structure- Single & Double Pole Structure
- Module Orientation- Portrait & Landscape
- Tilt Angle : 0-40 Degree or Depends on the Latitude
- Corrosion resistance - Up to C6
- Structural Material - Aluminium
- Material : AL 6063 T6 & AL 6061 T6 Anodized/Non-Anodized



# OFF-GRID SOLAR PUMP

Maximize Your Harvest

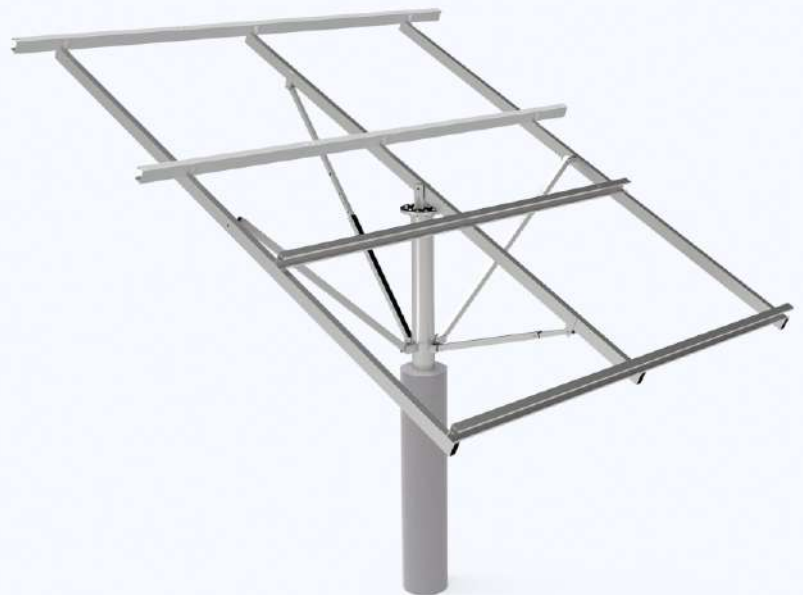
Off-Grid Agri-PV Solutions for Optimal Land Use.

MTE Structure's solar water pumps draw water efficiently from both surface and underground sources, making irrigation not only cost-effective but also eco-friendly.

## Technical Specifications:

- Type of Structure- Manual Adjusting Dual Axis Structure
- Tilt Angle- 0 to 40 Degree with 360 Degree Rotation
- Module Orientation- Portrait & Landscape

- Corrosion resistance - Up to C6
- Structural Material - Zinc-Magnesium Alloy Coating or HDGI/Galvalume/POSMAC



RAFTER



TOP PLATE



PURLIN



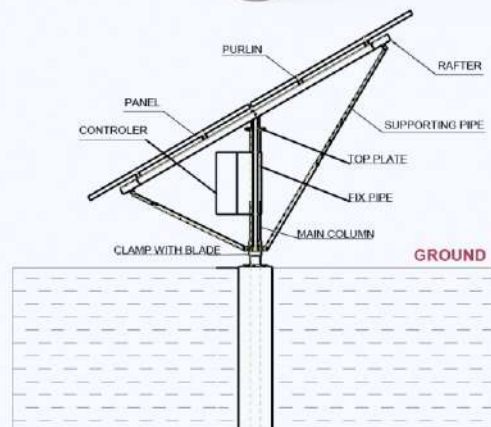
FIX PIPE



SUPPORTING PIPE



MAIN COLUMN

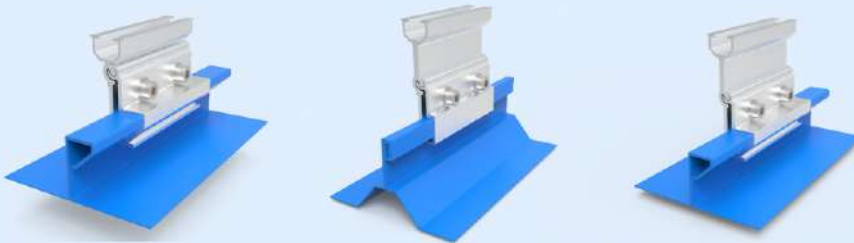


# NON PENETRATIVE CLAMPS (NPC)

Non-penetrative clamps offer a mounting solution without the need to drill holes into the roof, preserving its integrity and preventing potential leaks. These clamps are designed to securely attach solar PV rails to metal or trapezoidal roofs using compression, adhesive, or friction-based methods.

## Technical Specifications:

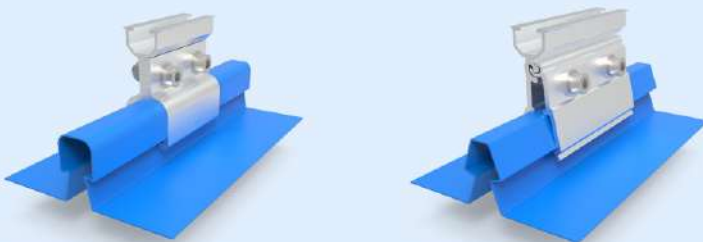
- **Roof Protection:** No need for drilling, reducing the risk of water leakage or structural damage.
- **Easy Installation:** Faster setup with minimal tools required.
- **Roof Slope Compatibility:** 3° to 25°
- **Structure Type:** Non-Penetrating
- **Module Orientation:** Portrait or Landscape
- **Tilt Angle:** Flush Mount (Along Roof), Inclined (5° to 20°)
- **Materials Used:** AL 6063 T6 & AL 6061 T6
- **Mounting Type:** By Self Drilling Screw, Rivet & Adhesive



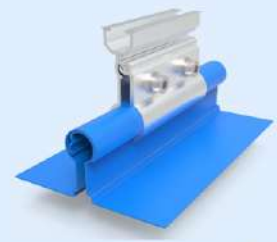
Standing Seam Roof Clamps



Proflex Roof Clamps



Kliplock Roof Clamps



Kalzip Roof

# ELEVATED MODULE MOUNTING STRUCTURES

Elevated Structures provides the perfect solution for added support on flat, inclined, and trapezoidal sheet metal claddings. Engineered with precision, our system enhances structural stability, making it an essential choice for a wide range of roofing applications.

## Technical Specifications:

- Type of Structures : Flush Mounted and Tilted Structure
- Module Orientation : Portrait & Landscape
- Material : AL 6063 T6 & AL 6061 T6 Anodized/Non-Anodized
- Mounting Type : By Self Drilling Screw, Rivet & Adhesive
- Quick and easy to mount
- Optimal load transfer through roof cladding
- Universal rail suitable for any roof crest
- Increased height for thermal stability of system
- PV Modules are installed in Portrait orientation
- High roof clearance



Elevated LEG



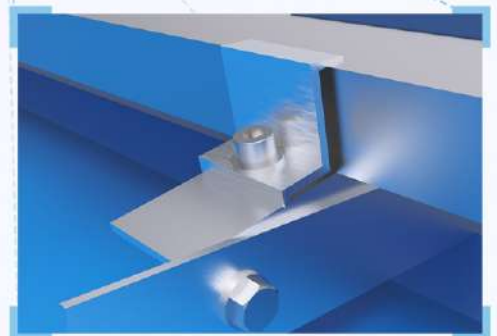
Strut Channel



Elevated BOTTOM



Elevated TOP



Elevated ZOOM

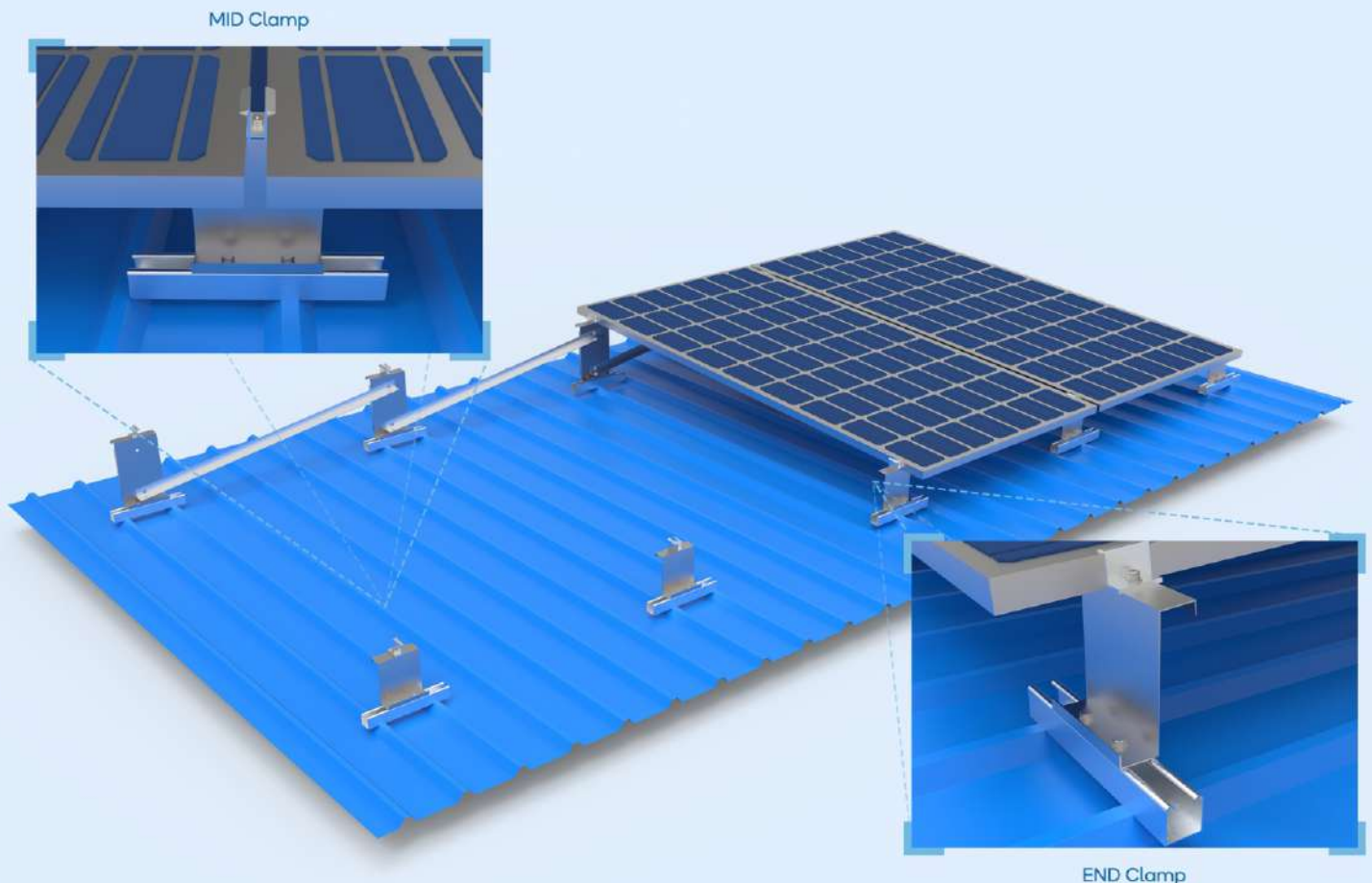


# Z BRACKET ASSEMBLY

The Z-bracket structure is a simple, efficient, and durable mounting solution for installing solar panels on corrugated metal roofs. The structure is named after its Z-shaped design, which allows it to easily fasten the solar panels to the roof without the need for complex mounting hardware.

## Technical Specifications:

- Type of Structures : Flush Mounted and Tilted Structure
- Module Orientation : Portrait & Landscape
- Material : Zinc-Magnesium Alloy Coating or HDGI/Galvalume/POSMAC
- Mounting Type : By Self Drilling Screw, Rivet & Adhesive
- Quick and easy to mount
- Optimal load transfer through roof cladding
- Universal rail suitable for any roof crest
- Increased height for thermal stability of system
- PV Modules are installed in Portrait orientation
- High roof clearance

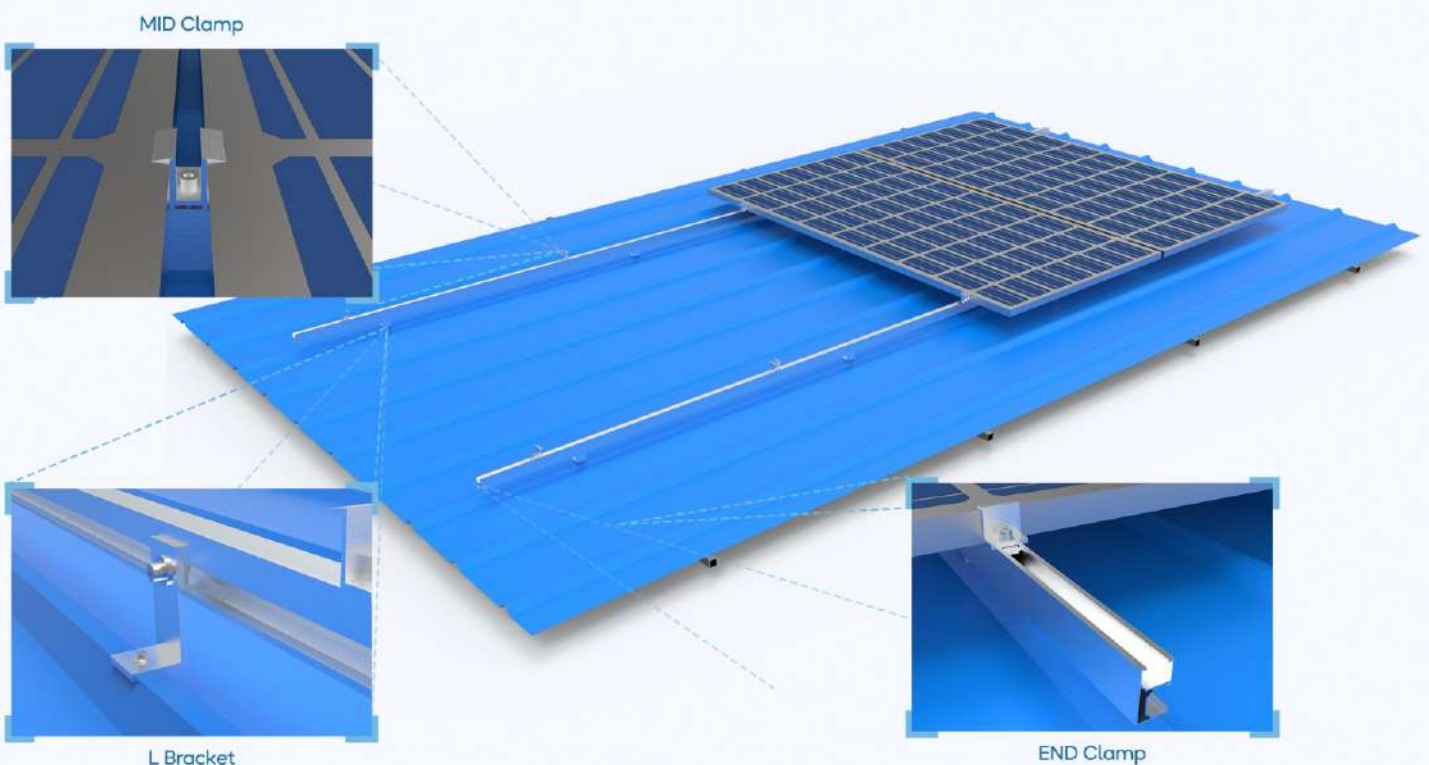


# RAIL STRUCTURE

The Long Rail System is a robust, high-strength solution for mounting solar PV panels on trapezoidal metal or asbestos roofs. It is designed for quick and easy installation, enabling the setup of high-capacity solar arrays in a short timeframe. It requires fewer roof penetrations, making it a more efficient and roof-friendly option.

## Key Features:

- **Effortless Installation & Maintenance:** Simple setup with minimal maintenance required.
- **Landscape Module Orientation:** PV modules are installed in a landscape configuration for better wind resistance.
- **Purlin-Mounted Strength:** Engineered to handle high wind loads with a strong, purlin-mounted structure.
- **Universal Rail Design:** Compatible with any roof crest, providing versatility across different roof profiles.
- **Pre-Existing Roof Holes:** Utilizes existing self-drilling screw holes, minimizing additional punctures.
- **Premium Materials:** Constructed from high-quality Aluminum 6063 T6 & AL 6061 T6 Anodized/Non-Anodized and genuine EPDM for longevity and performance.



# LANDSCAPE RAIL

Our Landscape Rail is lightweight and optimized system is ideal for mounting solar PV panels on trapezoidal metal roofs. With quick and easy installation, it allows for high-capacity solar panel setups in minimal time, making it perfect for a wide range of large-scale applications.

## Technical Specifications:

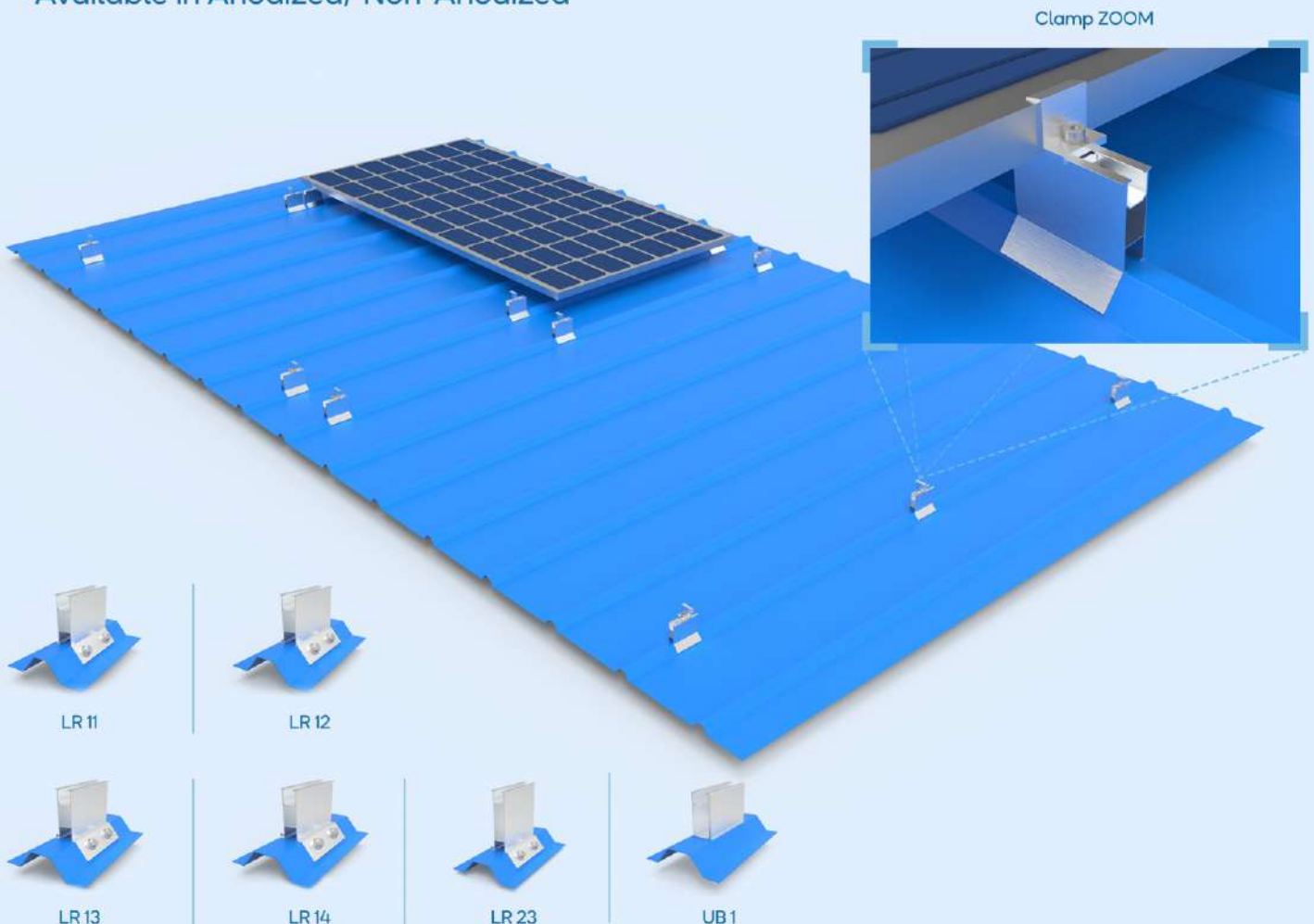
- Lightweight & Optimized system
- Easy Installation & Maintenance
- PV Modules installed in **Landscape** orientation
- Compatible with all PV module.
- Roof clearance of 100mm
- Cost Effective Solution
- Available in Anodized/ Non-Anodized

## Landscape Rail Dimensions:

- Height: 80 mm | Customizable
- Length: 100 mm | Customizable

## Raw Material Used

- Aluminum 6063 T6 & 6061 T6



# MONO RAIL

Our Mono Rail System is a lightweight, efficient solution for mounting solar PV panels on metal roofs. Its easy installation enables quick setup of high-capacity solar panels, making it ideal for large-scale applications.

## Technical Specifications:

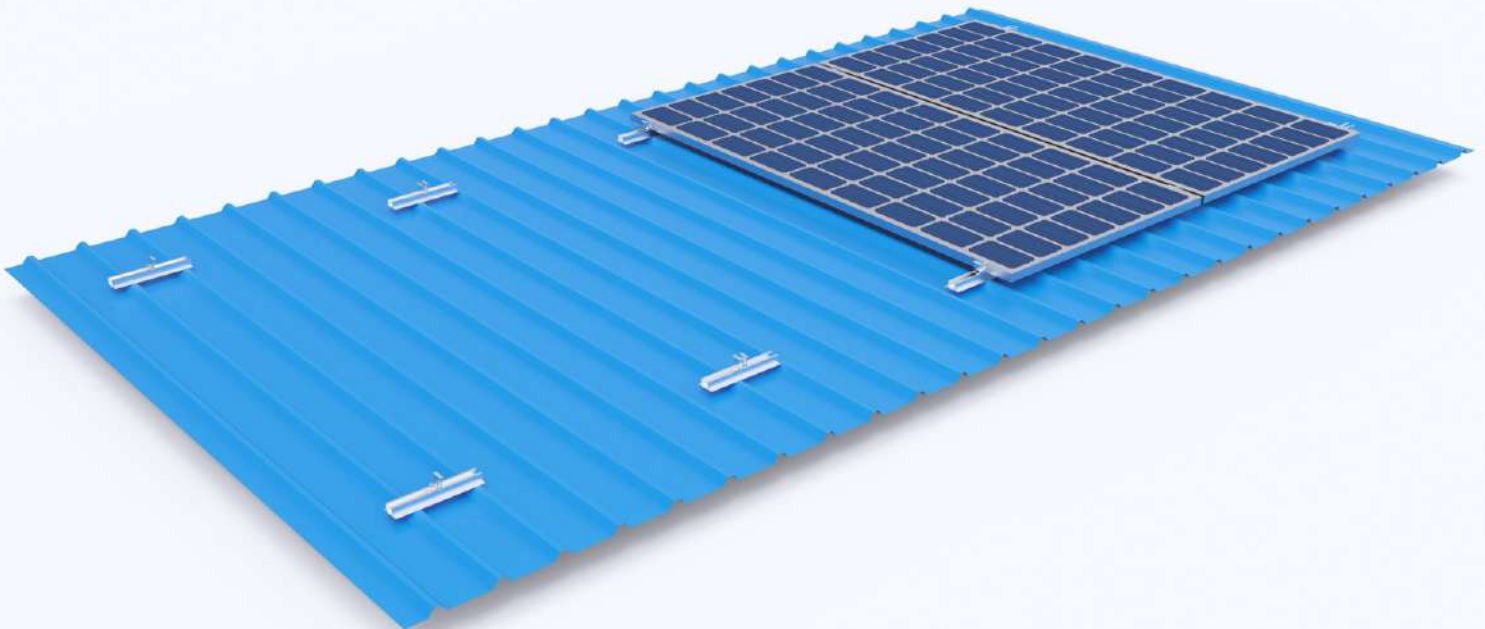
- Lightweight & Optimized system
- Easy Installation & Maintenance
- PV Modules installed in **Portrait** orientation
- Compatible with all PV module.
- Roof clearance of 100mm
- Cost Effective Solution
- Available in Anodized/ Non-Anodized

## Landscape Rail Dimensions:

- Height: 30 mm | Customizable
- Length: 300 mm | Customizable

## Raw Material Used

- Aluminum 6063 T6 & 6061 T6



MONO RAIL  
30MM



MONO RAIL  
60MM



MONO RAIL  
70MM



MONO RAIL  
80MM



MONO RAIL  
100MM

# OUR VALUED CLIENTS

adani

susten  
By Mahindra

GOLDI™  
Renewed life

harsha  
abakus solar  
Energizing. Empowering. Enlightening.

Ciel  
Terre

vikram solar

CleanMax  
SOLAR

ميدال للكابلات  
Midal Cables

WAAREE

madhav  
corp

HERO  
FUTURE  
ENERGIES  
planet positive power

POLYCAB  
POLYCAB INDIA LIMITED

Qi-energy  
Energy for life

Topsun®  
Future is Secured

GeWiS  
GRUPPE

Grace  
India | China | USA

SOLEOS

FIRST  
ENERGY

ENERPARC

ASHOKA  
Ashoka Buildcon Ltd.

RAYZON  
GREEN ENERGIES

FOURTH  
PARTNER  
ENERGY

ENVIRONOMICS  
FOR A BETTER FUTURE

Z

SOLEX

7greens™  
Merging Green Technologies

aditya

BHAGERIA INDUSTRIES LIMITED  
(Formerly known as Bhageria Dye Chem Ltd.)  
ISO 9001:2000

ROOFSOL

Prozeal  
Infra Engineering  
Private Limited

HARTEK®

UREnergy  
HANGING SOLAR ENERGY

PV POWER TECH

GreenBrilliance™

MEC  
MECpower solutions

GENSOL

HEXATRON  
HEXATRON  
Industries Limited

SOLARIUM

TERAVON  
SOLAR ENERGIES  
PRIVATE LIMITED  
MADE WITH THE SOL.

SOLAR 91  
ENERGIZING INDIA



ZTRIC

MECHATRONIK  
TECHNOLOGIES PVT. LTD.



## EXPORTED COUNTRIES



**Most Optimum and  
Cost-Effective Solutions**



**Best in Market  
Warranty**



**Quick Dispatch and  
Neat Installations**



**High Strength Products with  
Long Life and Easy Maintenance**



**Design Wind Speed  
up to 225 kmph\***



**Prompt and Apt  
After-Sales Support**



**950+**

Clients  
Worldwide

**10+**

GW (till now)  
Total Installation

**200K**

sq. ft. Manufacturing  
Facility

**06+**

GW (Per year)  
Production Capacity

**09+**

Years  
Experience



# CONNECT WITH US

## Address:

Office No-9028, Building No - 15  
Road No -3801 Block No - 338,  
ALQUDAYBIYAH

## Contact Us:

+973 3221 3369  
+91 8469966688

sales@mtestructure.com

## Find Us On:

